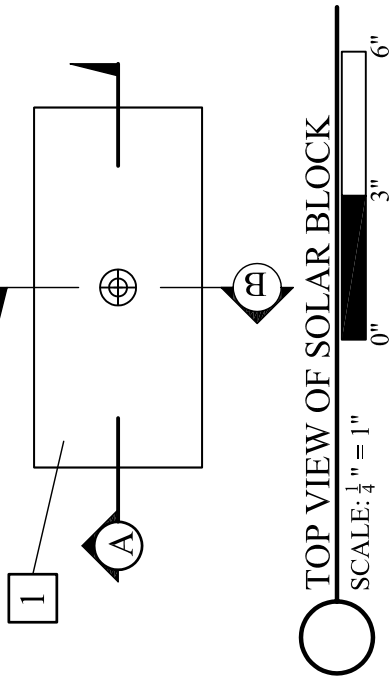
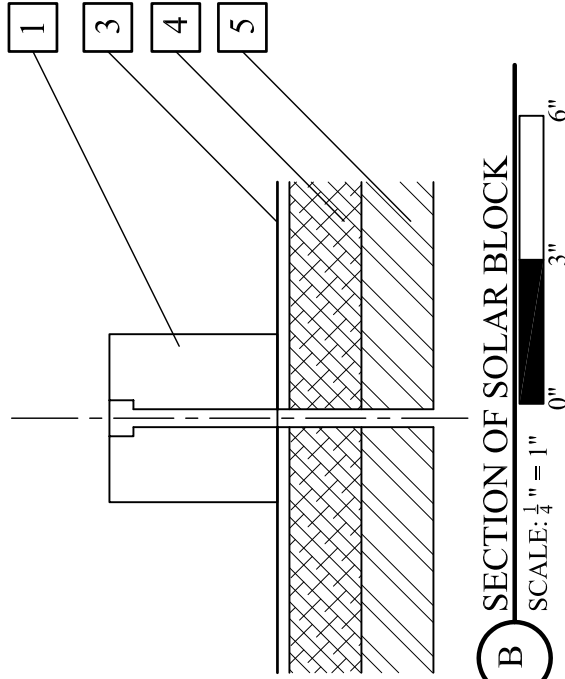
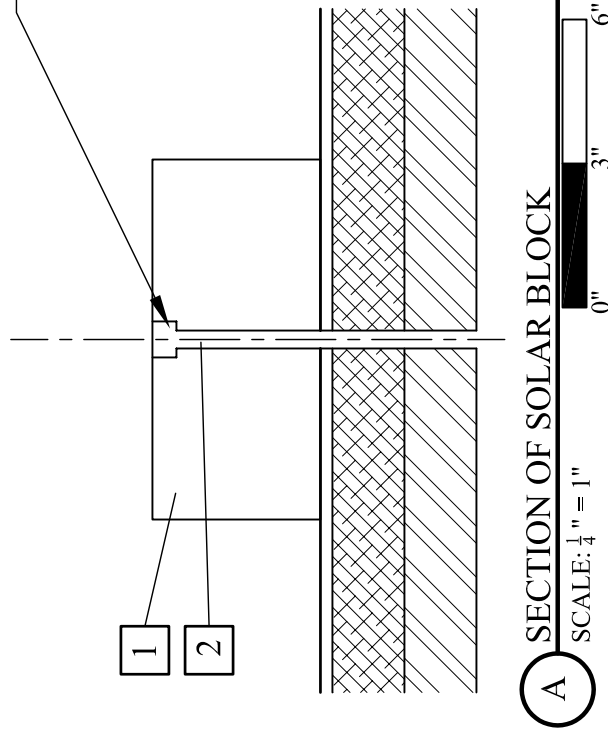


FOAM ROOF SURFACE

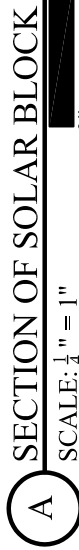


COUNTERSINK



**NOTES:**

1. PRESSURE TREATED WOOD BLOCK OR SLEEPER (SIZE OF BLOCK & NO. OF BOLT HOLES VARIES)
2. LAG BOLT HOLE (LAG BOLT OMITTED FOR CLARITY)
3. EXISTING COATING LAYER
4. EXISTING FOAM ROOF SYSTEM; 40 PSI MAX ALLOWABLE COMPRESSIVE STRENGTH
5. SUBSTRATE O/ ROOF DECK



**PROCEDURE:**

1. BOLT HEADS SHALL BE COUNTERSUNK BELOW WOOD SURFACE
  2. ALLOW DURA-FOAM TO SEAL BEFORE PLACING ANY EQUIPMENT
- WARNING: OVER-TIGHTENING BOLTS WILL DAMAGE FOAM ROOF SYSTEM; EQUIPMENT LOAD + FASTENER LOAD NOT TO EXCEED 40 PSI**

**SURFACE MOUNTED BLOCK OR SLEEPER  
DETAIL 08-05-2004**

Site:

**Dura-Foam**

1185 O'Brien Drive  
Menlo Park, CA 94025  
Phone: (650)327-3200  
Fax: (650)327-1566

SIZE	FSCM NO.	DWG NO.	REV

SCALE: SHOWN

SHEET